



LAWN TO LAKE

Lake-friendly home & yard care: natural lawn care in your community

Presented to:
2015 Illinois Lake Management Association
February 19, 2015

Adrienne M. Gulley
Illinois-Indiana Sea Grant Program



UNIVERSITY OF ILLINOIS
EXTENSION



Sea Grant
ILLINOIS - INDIANA

Great Lakes
RESTORATION 



our goal

To promote sustainable lawn and landscape practices at the household and community level. Lawn to Lake helps prevent pollution reaching Lake Michigan by working with those responsible for lawn and landscape care to reduce use of pesticides and other toxic substances.

from the lawn to the lake



lawns in landscapes



A decorative brushstroke at the top of the slide, featuring a yellow-to-white gradient with a light blue shadow underneath, set against a dark blue background.

basics of natural lawn care

3" LAWNS

3" mowing height

Leave grass clippings

Aerate soil

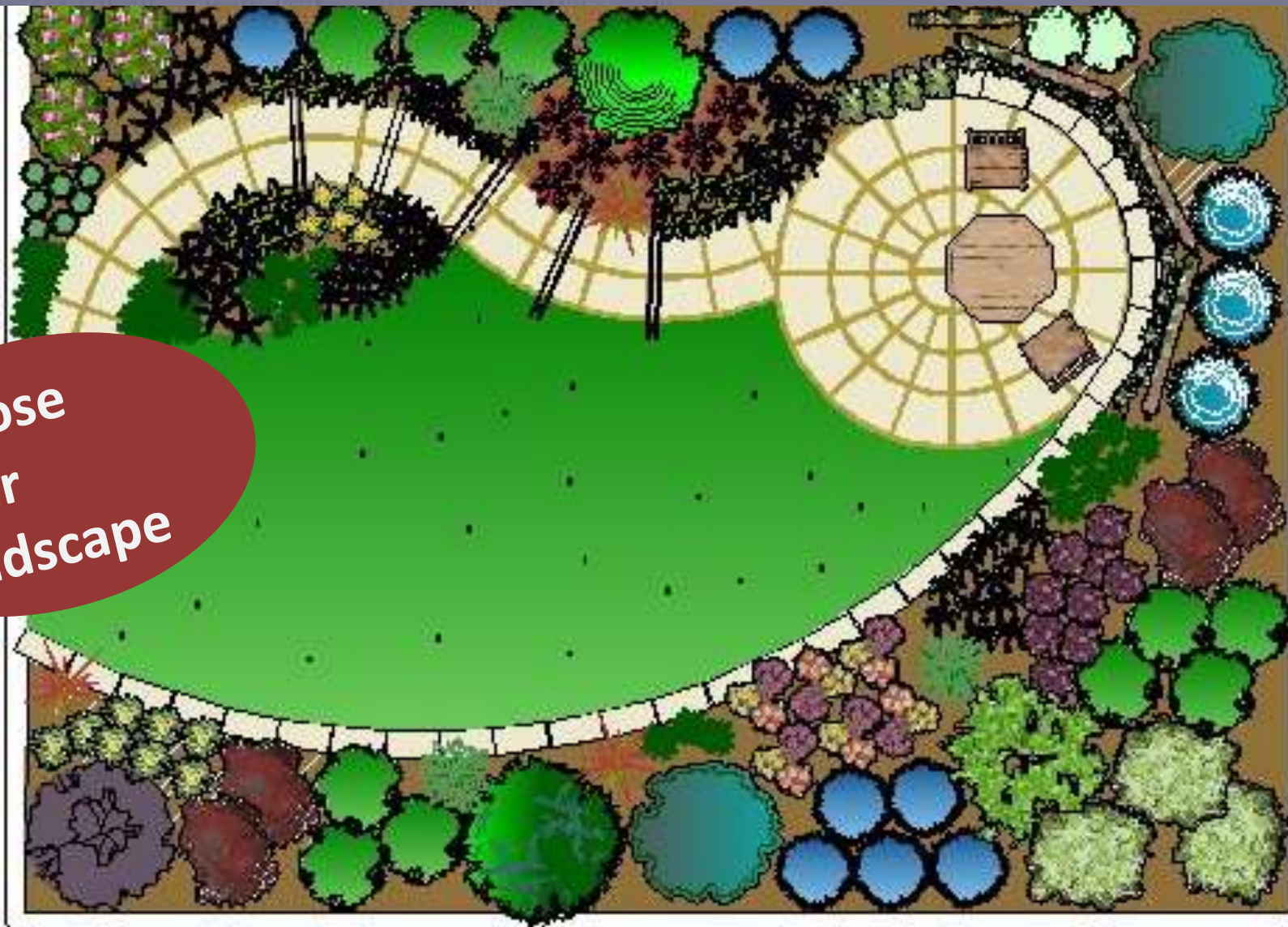
Water wisely when needed

Natural nutrients when needed

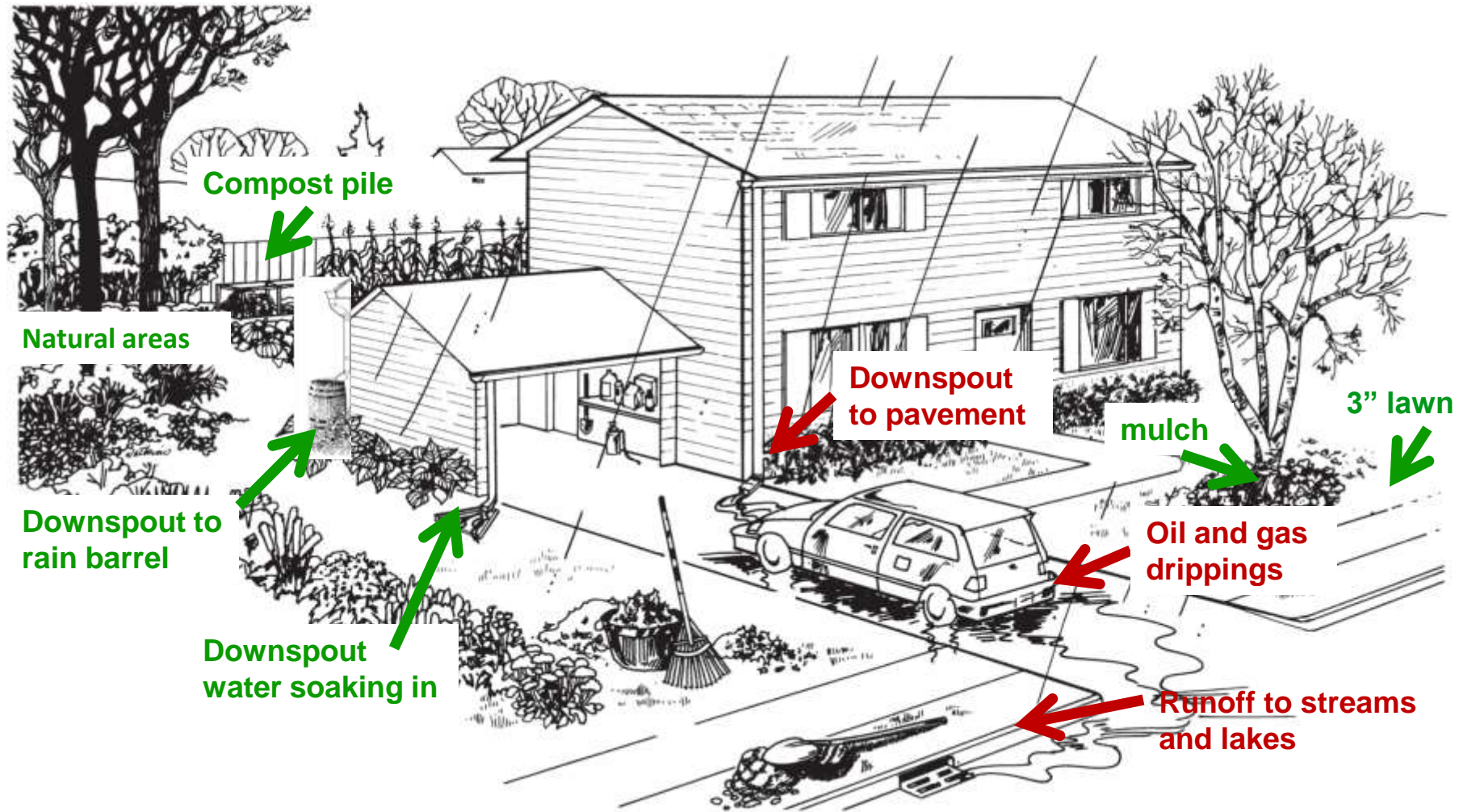
Soil care is the foundation

alternatives to lawn

choose
your
landscape



a natural yard



target audiences

- landscape professionals, municipalities, homeowners associations
- train the trainer
 - extension's master gardeners
 - teachers
- business and institutional property owners
- lawn product retailers
- general public involved in lawn and landscape care



what can I do?

- Educate yourself
- Natural Lawn Care BMPs on your own property
- Find willing partners to educate and do projects
- Talk to local officials, public property managers
- Use social marketing concepts to encourage BMP adoption





getting started

- Lawn to Lake – www.lawntogreatlakes.org
- Lawn Talk - <http://urbanext.illinois.edu/lawntalk/>
- Midwest Pesticide Action Center (formerly Safer Pest Control Project)
– <http://midwestpesticideaction.org/>
- *Lake Notes* fact sheets:
“Home and Yard” “Fertilizers and Pesticides” “Septic Systems”
(available free from Illinois EPA - Lakes Unit, 217/782-3362)
- Recommended reading
 - *The Organic Lawn Care Manual* by Paul Tukey
 - Great step-by-step ‘how to’ manual
 - *American Green: The Obsessive Quest for the Perfect Lawn* – by Ted Steinberg
 - *How to Get your Lawn Off Drugs* – by Carole Rubin



UNIVERSITY OF ILLINOIS
EXTENSION



Adrienne M. Gulley
amgulley@illinois.edu
217-244-9125

3/3/2015