



Highland Lake

Background Information

- Lake County, Illinois
- 110 acres – 29 feet – Kettle Lake Geomorphology
- 150 of residents/homes
- Near the top of the drainage basin
- Strict access policy on boats
 - Limited locations
 - No public access points
 - All boats inspected before and after removal
 - Signs posted
 - Community informed of policies

Trailer Boat Policy



Policy Regarding Boat Trailer Use in Parks

Please refer to [rules and information](#) for general boating policies. All watercraft (motorized or not) and trailers must be power washed and inspected for zebra mussels prior to placement in Highland Lake. Please contact your shore representative if you need help with the inspection. Anyone found to be introducing zebra mussels into the lake is subject to local and IL state fines.

Trailer Boat Policies and Procedures

Effective March 1, 2017, the following procedures must be followed by all boat owners wishing to launch and/or remove their boats using a trailer:
Per a 2009 court decision, use of 36 volt electric motors was found reasonable on Highland Lake.
Downey Park is the only approved launch/removal site. As Szontagh Park does not fall under the governance of HLPOA, no rules regarding the use of that park can be offered.

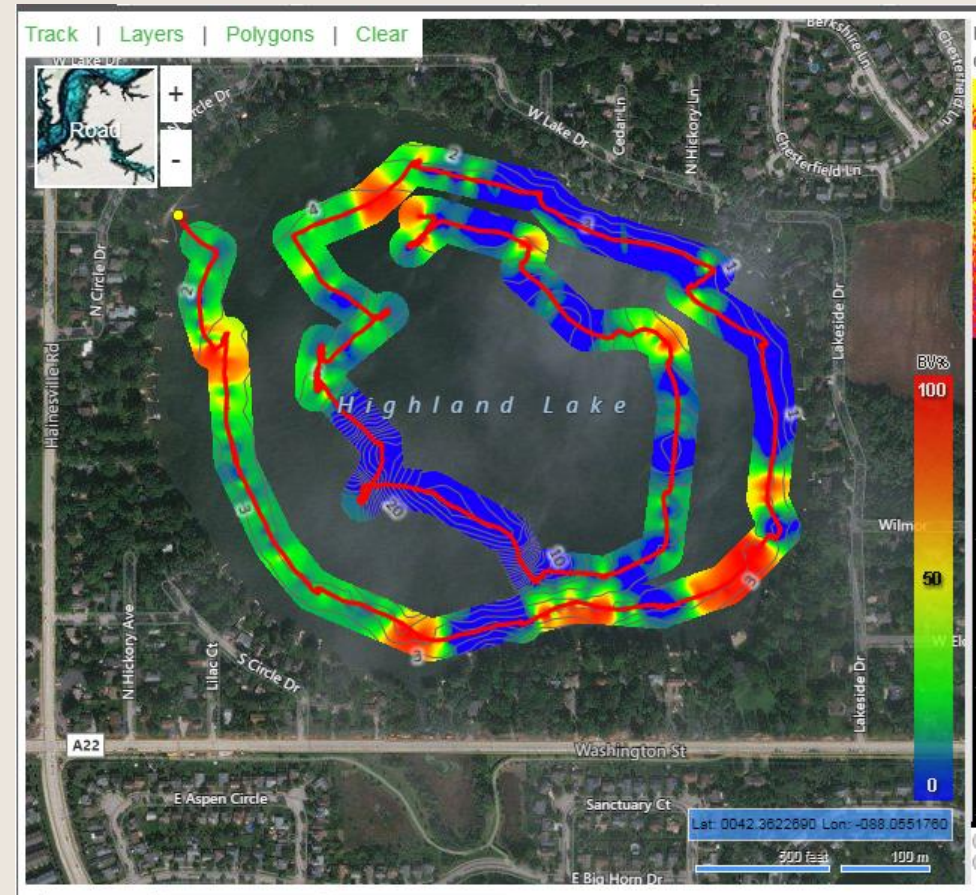
In order to obtain access to Downey Park, boat owners must contact their shore representative or the HLPOA President at least **five days** prior to the scheduled launch/removal date. Failure to do so may necessitate a delay in the occurrence. The president will arrange for a Board member to unlock the gate and monitor any damage to Park property. If any significant damage occurs, the boat owner will be responsible for its repair. The boat owner must be present at the time of the launch/removal in order to address any issues that may come up.

Anyone using a trailer to launch/remove a boat must be a HL resident. The gate unlocking fee for trailered boat access can be paid by either payment of annual dues to HLPOA, or payment of the unlocking fee of \$50.00 to HLPOA for **each** unlocking event.

Owner must use the services of Board approved marine providers. Currently, only Ahlstrand Marine in Mundelein has been approved. The approval is contingent on Ahlstrand's cooperation with power washing the trailer just prior to its entry into Highland Lake. Use of any other provider must be approved at least thirty days prior to the desired launch/removal date.

Challenges

- What are some past problem(s) for your HOA?
 - EWM
 - Lily pads
 - Fish populations
 - Water level
- What are the causes of these problem(s)?
 - Invasive water plants
 - Fishing policies
 - Dam grate control
- Did you study the issue? If so, how? Was it helpful?
 - Extensive research on EWM –
Now using spot treatment along with whole lake
 - Stocking – Carp Fest
 - Avon township monitors grate



Future

- problems that you currently are working on – Zebra Mussels
- need help? Yes, we have some solutions, but need to study the process
- need ideas? Yes, any thoughts are welcomed
- how can ILMA members help? Help document Zebra Mussel monitoring and control



Solution

- First Zebra Mussel May 27, 2018.
- Resolution to problem
 - Monitor
 - Study
 - QZ-Tech
 - Others - Processed Plant Chlorophyll
- did it work? – not yet
- how did you fund?
 - Need funding for research



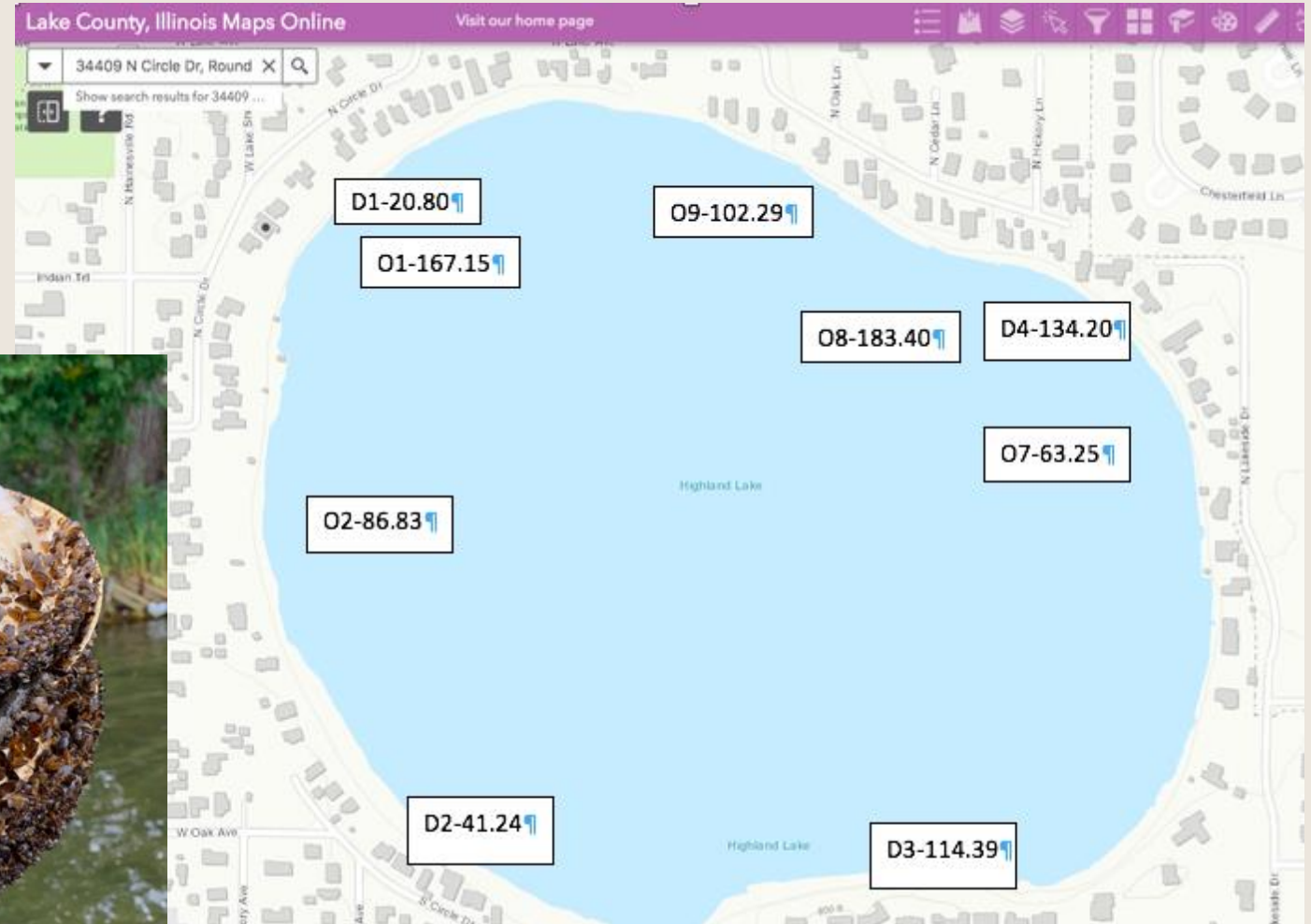
Three Year Study

2019 – Monitor

14 Zebra Mussel Monitoring Device (ZMMD2019)

- Dock
- Offshore

Results



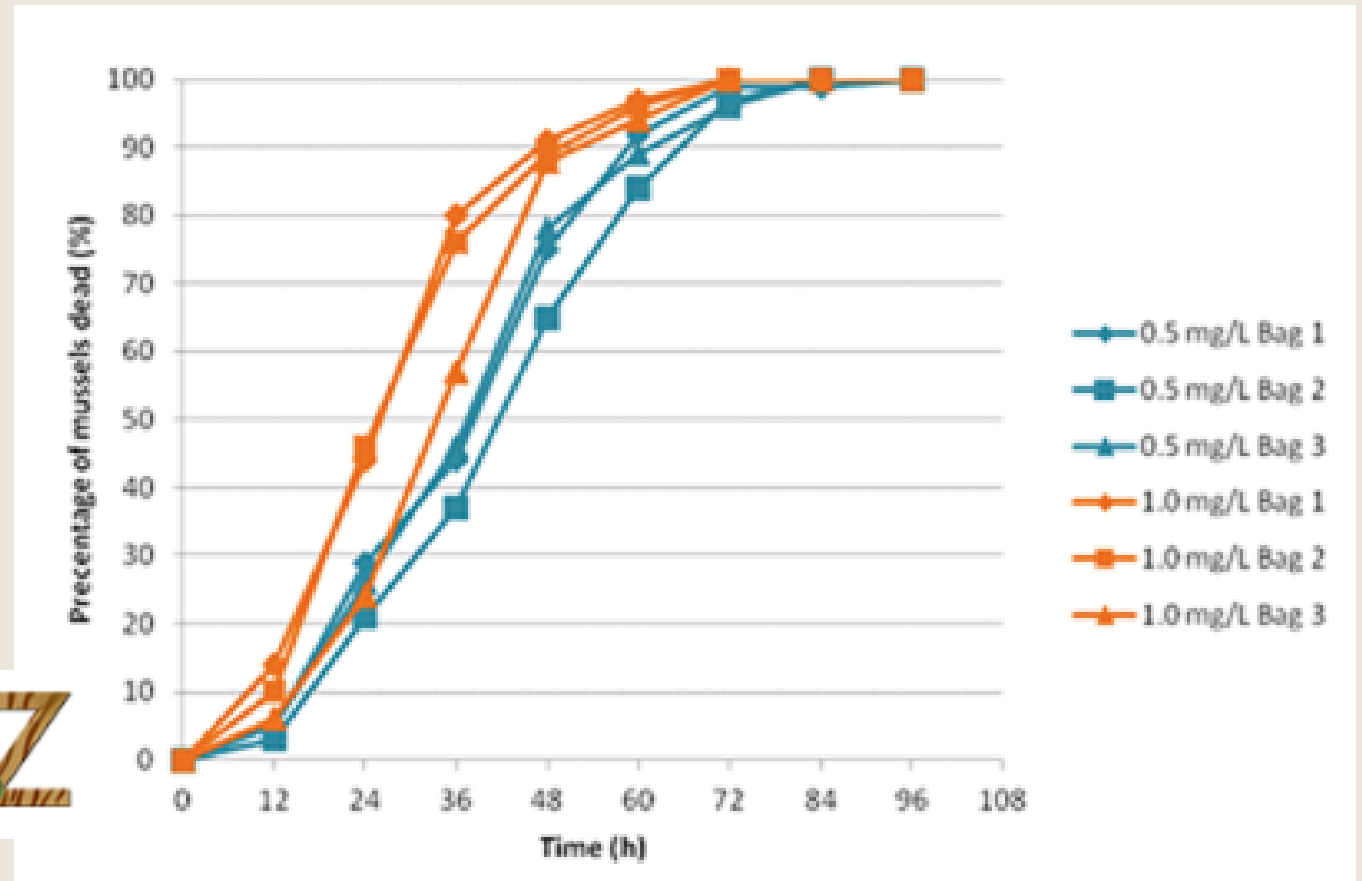
Three Year Study

2020 – Treat and Monitor

14 Zebra Mussel Monitoring Device
(ZMMD2019)

- Dock
- Offshore

Treatment – Earthtec QZ
Shoreline
Inlet
Raft



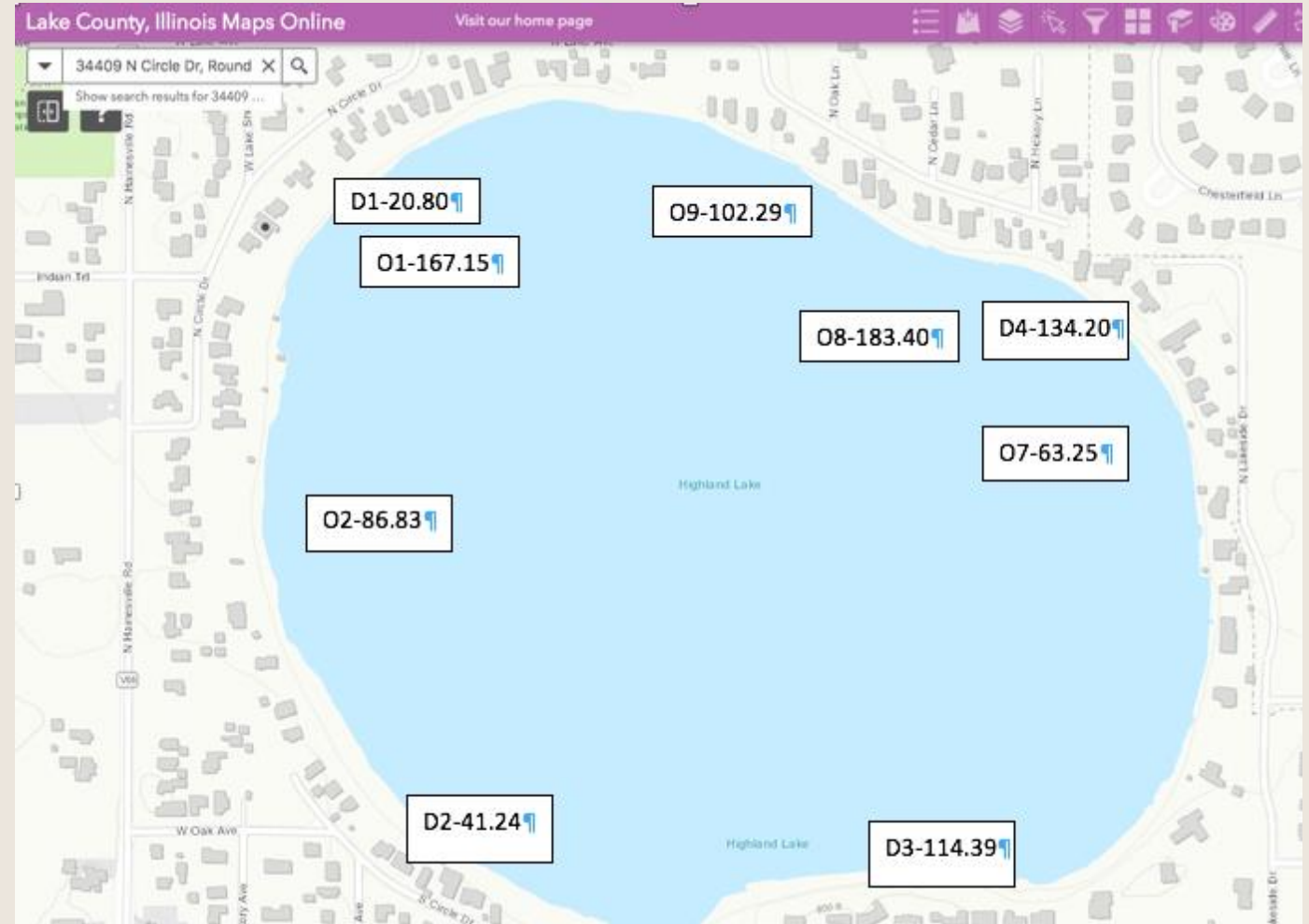
Three Year Study

2021 – Monitor

14 Zebra Mussel Monitoring Device
(ZMMD2019)

- Dock
- Offshore

Results



INFORMATION

John Sonnenberg EdD

847-922-5572

JohnSonnen@aol.com

Facebook: Zebra Mussels Coast Guard

EarthTech QZ

<https://earthtecqz.com/>

David Hammond (dhammond@earthsciencelabs.com)