



ILMA-LAKES

ILLINOIS LAKES MANAGEMENT ASSOCIATION

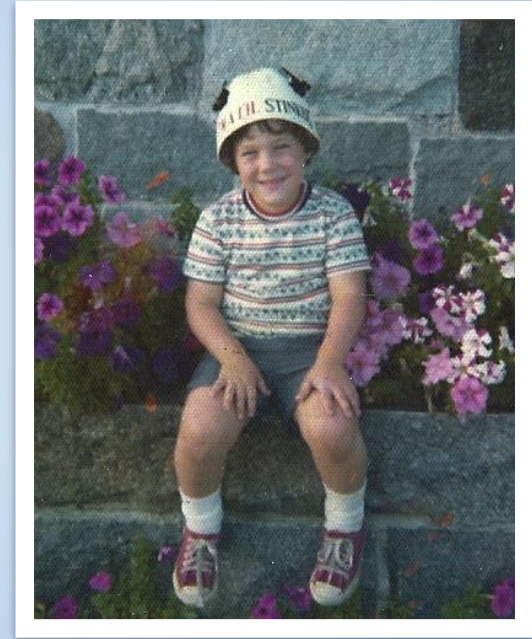
Paul Ritter

Biology – Ecology - Earth Science

Pontiac Twp. High School

How I became a teacher

- ❖ Born in Pontiac, Illinois
- ❖ Degree in Zoology -1992 EIU
- ❖ Worked for IDOC now IDNR
- ❖ Spring Break Clearwater, FL
- ❖ Florida Calling
- ❖ Grandma Ritter
 - ❖ Teacher 50 years
 - ❖ Advice - Get them excited and will make them want to learn



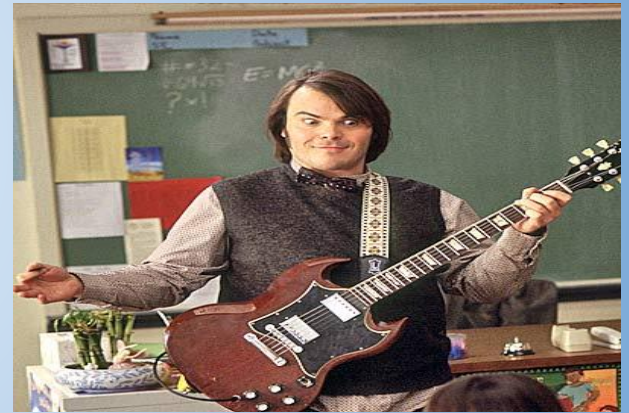
The extremes and how to get the best of both worlds in teaching

<https://www.youtube.com/watch?v=uhiCFdWeQIA>

https://www.youtube.com/watch?v=fvLg4v_nPQ4



VS.



Partnerships / Networks

Partnerships with who?

- ❖ *Schools*
- ❖ *Businesses*
- ❖ *Governments*
- ❖ *Rock stars*
- ❖ *Anyone who can make a contribution!*



Importance of Professional Networks

- Locate like-minded professionals
- Support one another
- Brainstorm together
- Celebrate successes
- Collaborate/form partnerships



Recent Programs

- ❖ Monarchs and Milkweed
- ❖ OES - Alligator Snapping Turtle
- ❖ Gravestone / Acid Rain Detection Project
- ❖ Prescription Pill and Drug Disposal Program
- ❖ P2D2 water testing / Li'll Ms. Atrazine

- ❖ Soles 4 Souls
- ❖ OES Pollinator Plot
- ❖ OES 30 by 2030

Monarchs and Milkweed!

- **Milkweed is threatened**
 - Monarch caterpillars only eat milkweed before their metamorphosis
- **Monarch Butterflies are endangered**
 - These iconic beauties have plummeted by 90 percent in the past 20 years
 - Illinois State insect
 - One storm in 2002 killed 500 MILLION monarchs
- **Our efforts**
 - Co-op with Pontiac Prison
 - Working toward other partnerships
- **<https://monarchsandyou.weebly.com/>**



Alligator Snapping Turtles



ALLIGATOR SNAPPING TURTLE

Operation Endangered Species

Releasing and Rehabilitating

Kaitlyn Schertz



P²D² International Prescription Pill and Drug Disposal Program

Goals

- Easy access
- Sustainability



80% of waterways tested in the U.S. were positive for traces of pharmaceuticals.



How?

- Walmart
- Chestnut Health



1 in 5 teens across the U.S. have abused a prescription medication.

P2D2 Water Testing

- Collecting water samples to test for pharmaceuticals in the water
- Working with SIU to send water testing kits throughout the state



- Supporting the movement to keep drugs out of your water



SOLES 4 SOULS

WEARING OUT POVERTY®



Soles for Souls is a non-profit organization that focuses on providing for those in need.

- Soles for Souls collects shoes and other clothing items and sends them down to third-world countries.
- Once the items reach their destination, they are distributed to citizens. The citizens then sell the clothing items to provide a consistent income for their families.
- Since 2006, Soles for Souls has donated over 35 million pairs of shoes, and also over 12 million pieces of apparel.
- Here at Pontiac Township High school, our Environmental Earth Science class is working with the Life Skills class in order to collect at least 10,000 pairs of shoes by the end of the year.

Food Waste Prevention

★ Facts

- $\frac{1}{3}$ of all food produced goes to waste
- If food waste was a country, it would be the third largest emitter of greenhouse gasses.



★ Goals

- Have a successful composting bin.
- Expand the composting services to students

★ My solution

- Start a school composting bin that is easy access for the cafeteria crew

POLLINATOR PLOTS

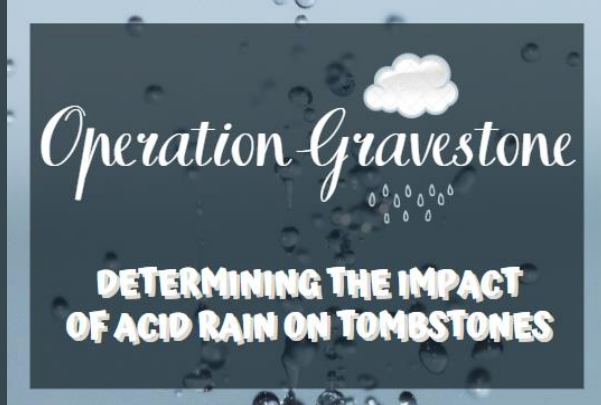


How we got started “if we don’t have any pollinators then we don’t have any food”

Enbridge Corporation
Jim Vogel and family







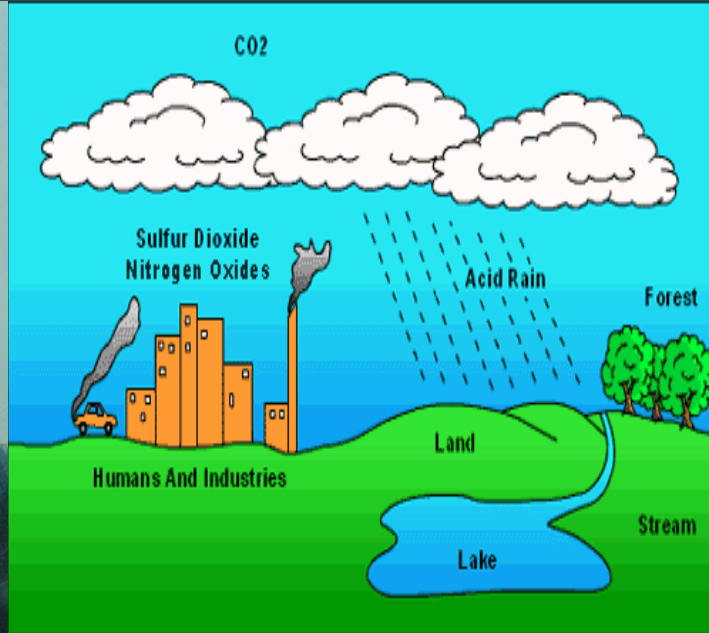
Operation Gravestone



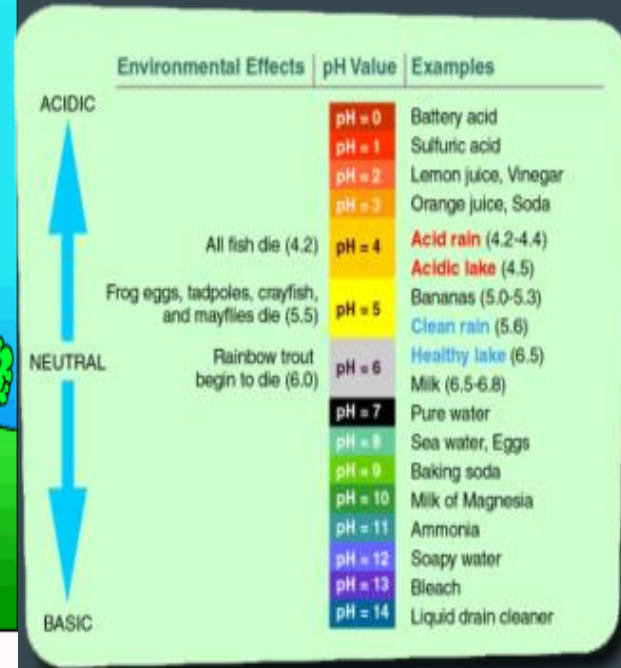
A project aimed to bring attention to the impact of the burning of fossil fuels.

Logan Gray

How is acid rain created? How does it compare (in acidity) to other liquids?



Acid Rain



Teamwork



How does it affect the environment?



“The greatest threat to our planet is the belief that someone else will save it.” - Robert Swan



Landowner: Enbridge
County: Livingston
Date: 6 January 2020

Practice: Wetlands
Location: 40.933175, -88.588386
Assisted By: Brian Hidden



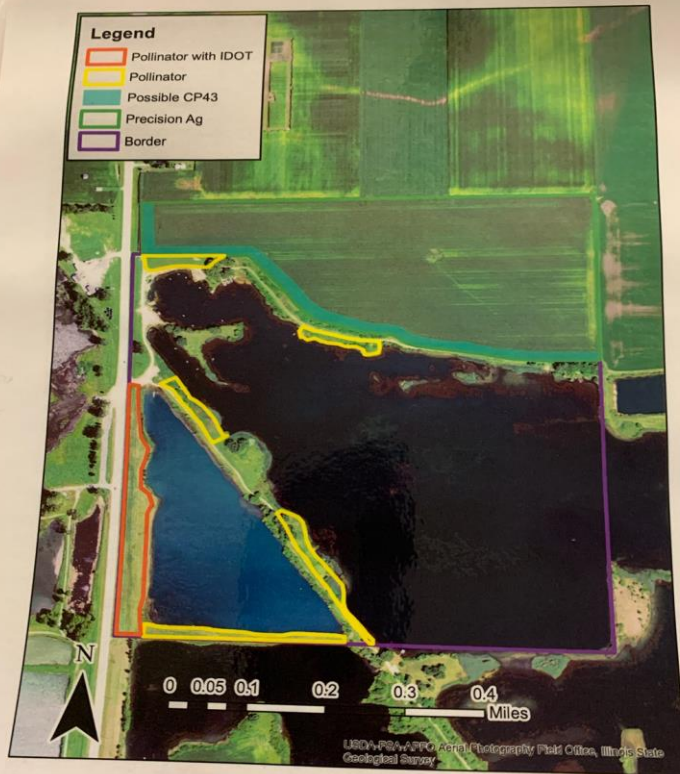
□ Berm
■ Basin

140
Yards

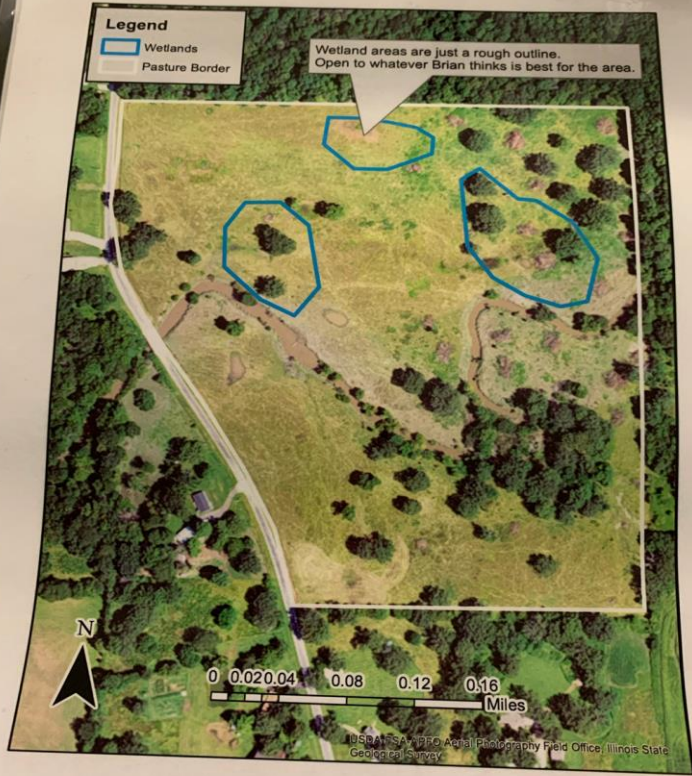


Legend

- Pollinator with IDOT
- Pollinator
- Possible CP43
- Precision Ag
- Border



Collection & Transportation Report
Total Weight Collected & Transported from
January 1, 2019 through December 31, 2019



What Are We Planting

Mainly Flowers
and some
grasses

Flowers:
Siberian
Wallflower,
Purple
Coneflower,
Milkweed, Black
Eyed Susan,
and Baby Blue
Eyes

Grasses:
Bromegrass,
Big and little
Bluestem,
and bluegrass





A message for you, from the Students of Illinois

Endangered Species Act and 30 By 30

What We Do:

- Reaching out and engaging in conversations

Our Goal:

- Make a change and make an action

How We Are Reaching Our Goal:

- [SR 1008](#)



Endangered Species Act and 30 By 30

- Urges the State to redouble its efforts to conserve the land, rivers, and lakes of Illinois for present and future generations.
- Further urges the State to pursue this goal in a way that protects private property rights and traditional land uses

