

Contractor Considerations

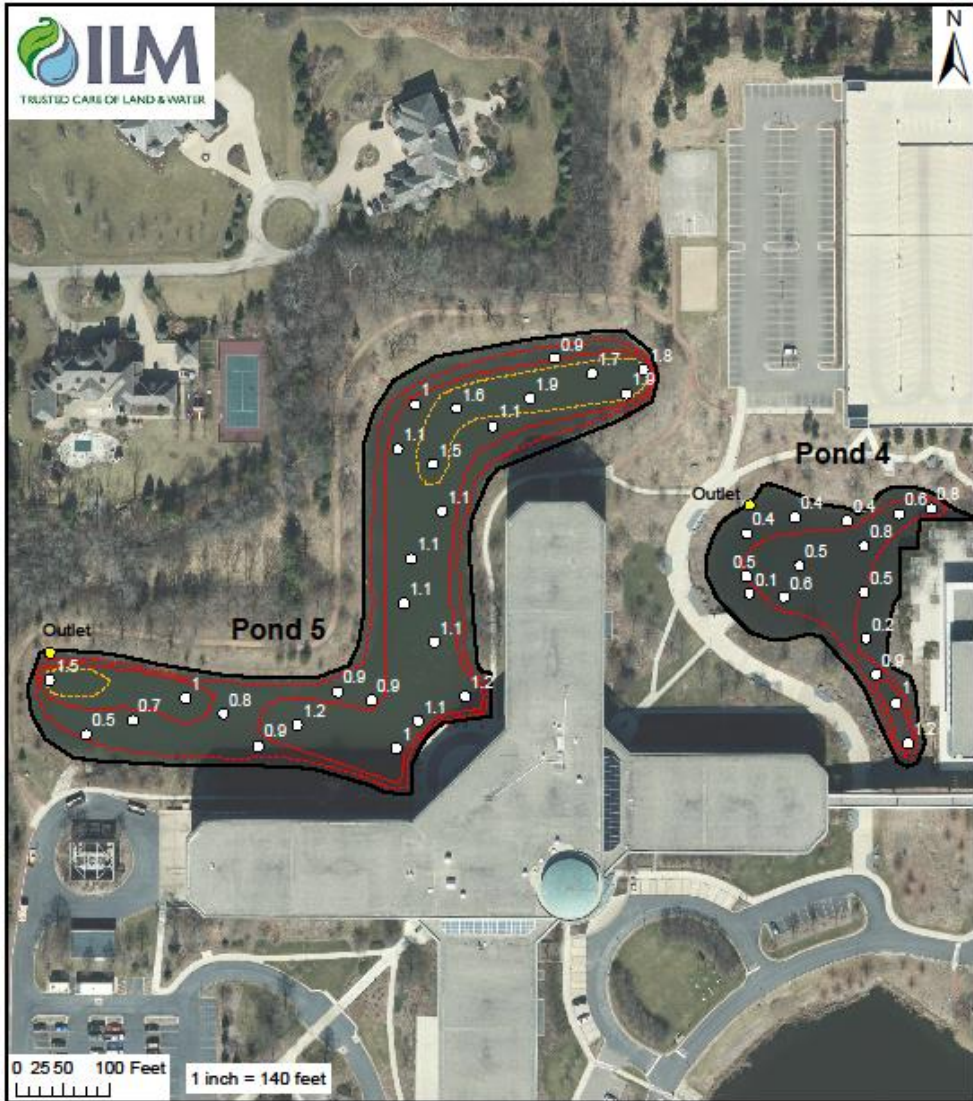


Keith Gray, President
Integrated Lakes Management

- “Verification of Material Removed” or “Measure of Contract Fulfillment”
- When Things Don’t Go According to Plan
- Material Transport/Disposal
- Restoration Expectations
- Timing of the Project



Verification of Material Removed



Legend

- Culvert
- Sample Point
- Shoreline
- 0.5 Foot
- 1 Foot
- 1.5 Foot

**Discover Riverwoods Campus
Sediment Thickness Map
April 15, 2019**



Legend

- Post
- Rip rap/ too shallow to dredge
- 0.5 Foot
- Shoreline

**Discover Riverwoods Campus
Sediment Thickness Map
October 29, 2019**



Prairie Harbor Marina



When Things Don't Go According to Plan











Restoration Expectations







Material Transport and Disposal

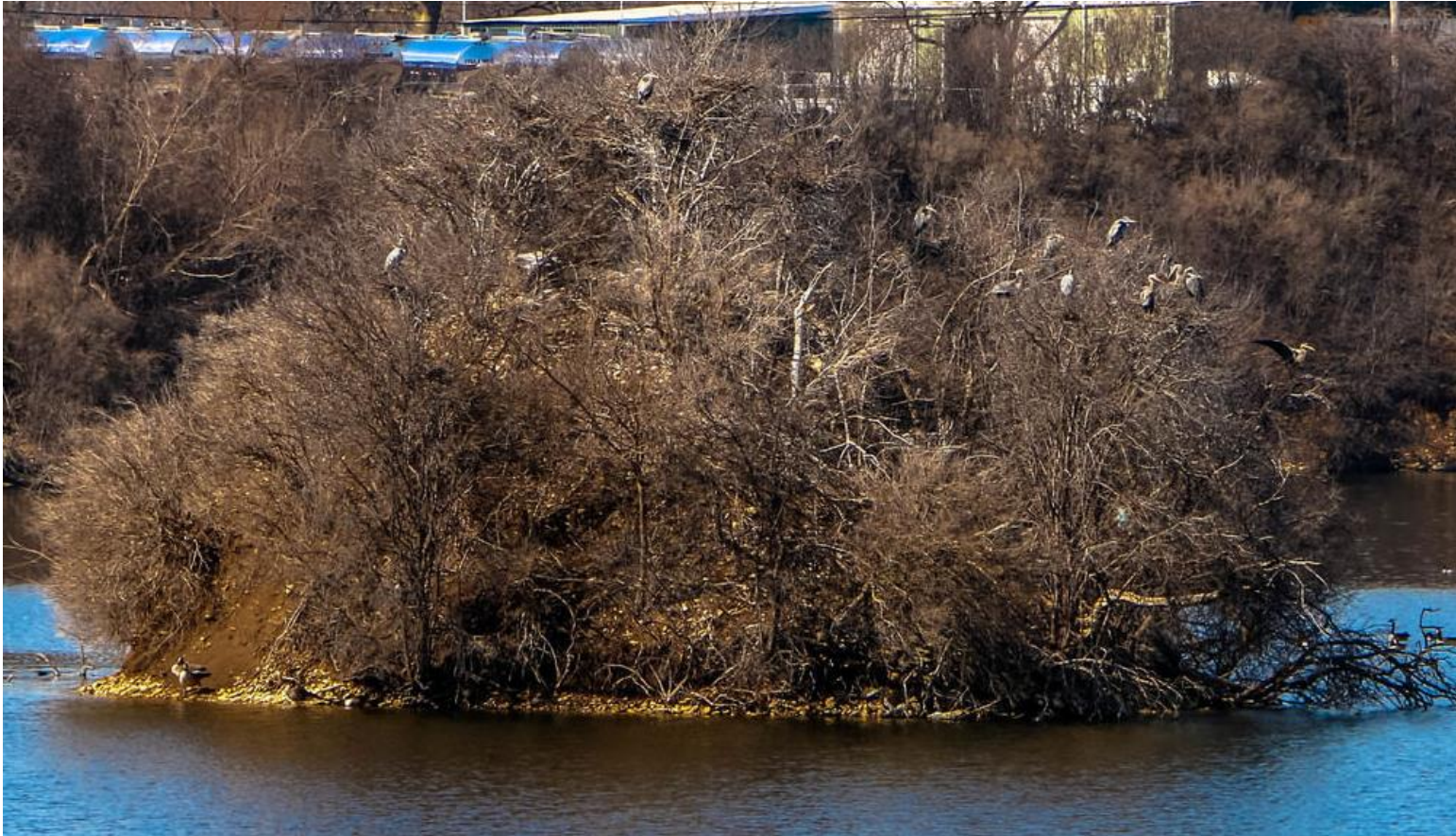




Timing of the Project



Migrating Birds





Spring Spawning



Winter Brumination



“Very few, if any projects go according to plan. Explore all possible ways for things to go wrong, discuss them, and agree on how to handle them before you start.”

