



The History, Ironies and Observations on Clean Water in America

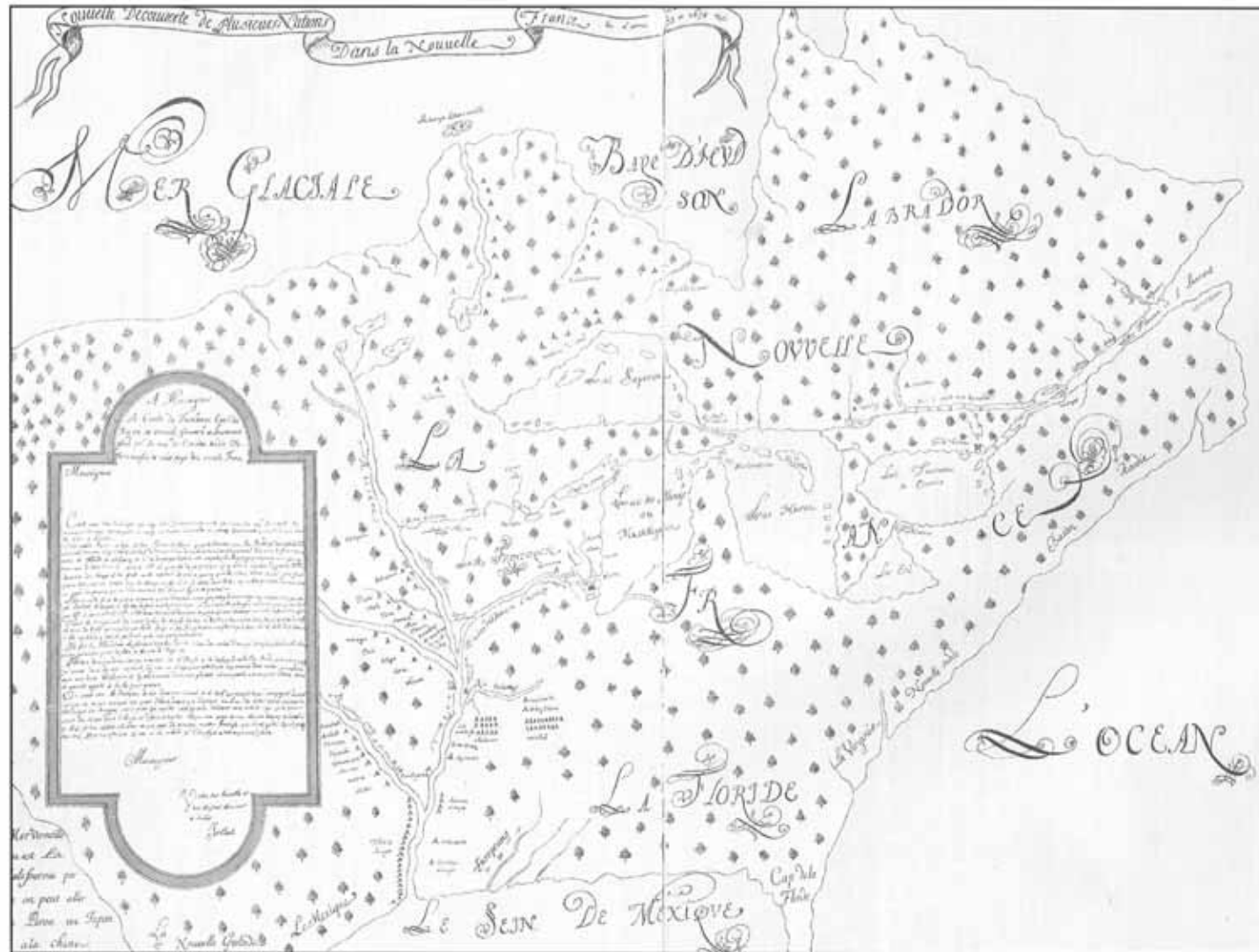
Nancy Schumm, CPESC



Schumm Consulting LLC

MAP 10

JOLLIET'S MAP, 1674



From the reproduction of the manuscript in Sara Jones Tucker, *Indian Villages of the Illinois Country, Part I, Atlas* (Springfield: Illinois State Museum, 1942), plate IV

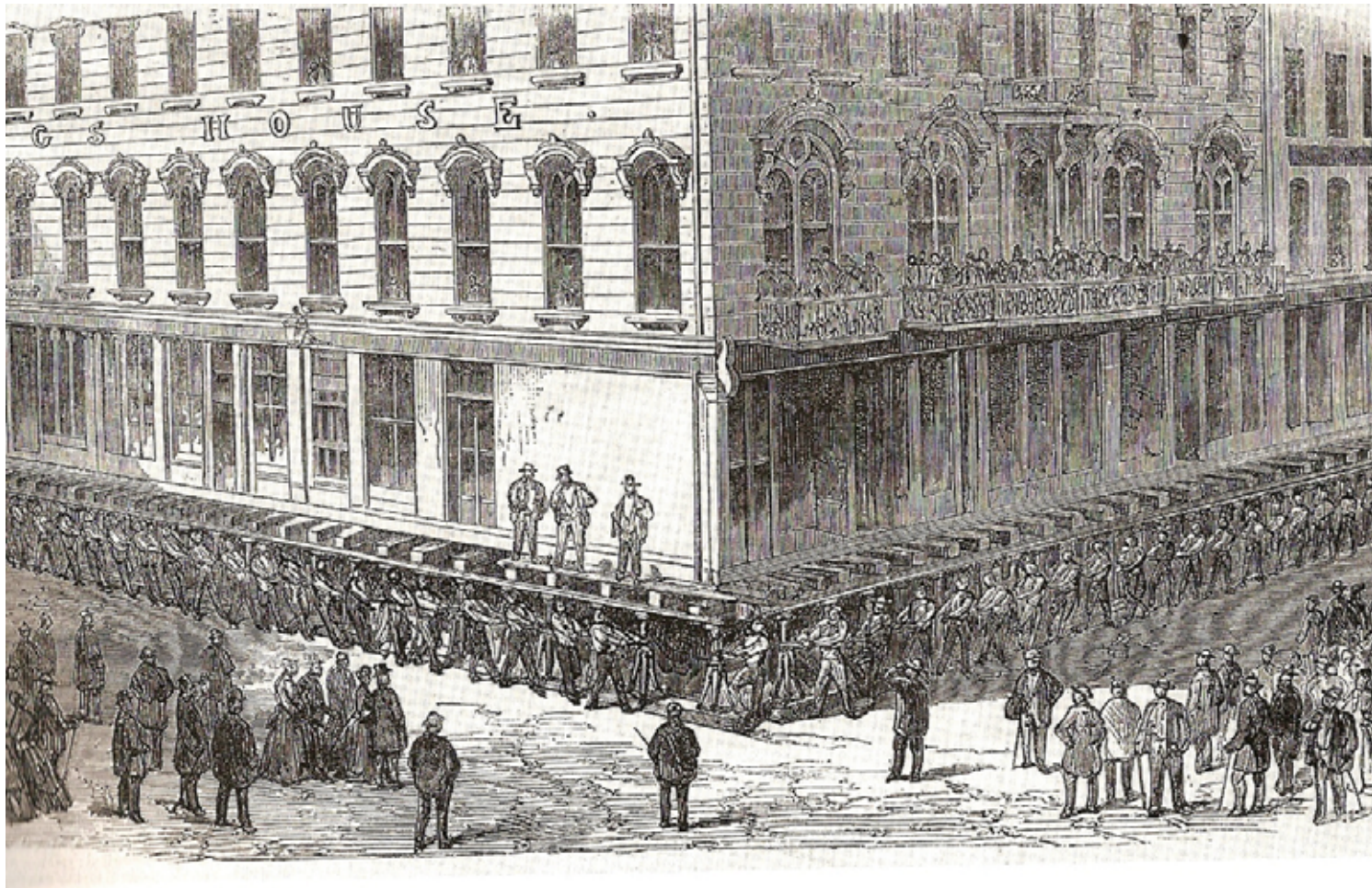
Maps from *Illinois History*, Illinois Historic Preservation Agency, 2004



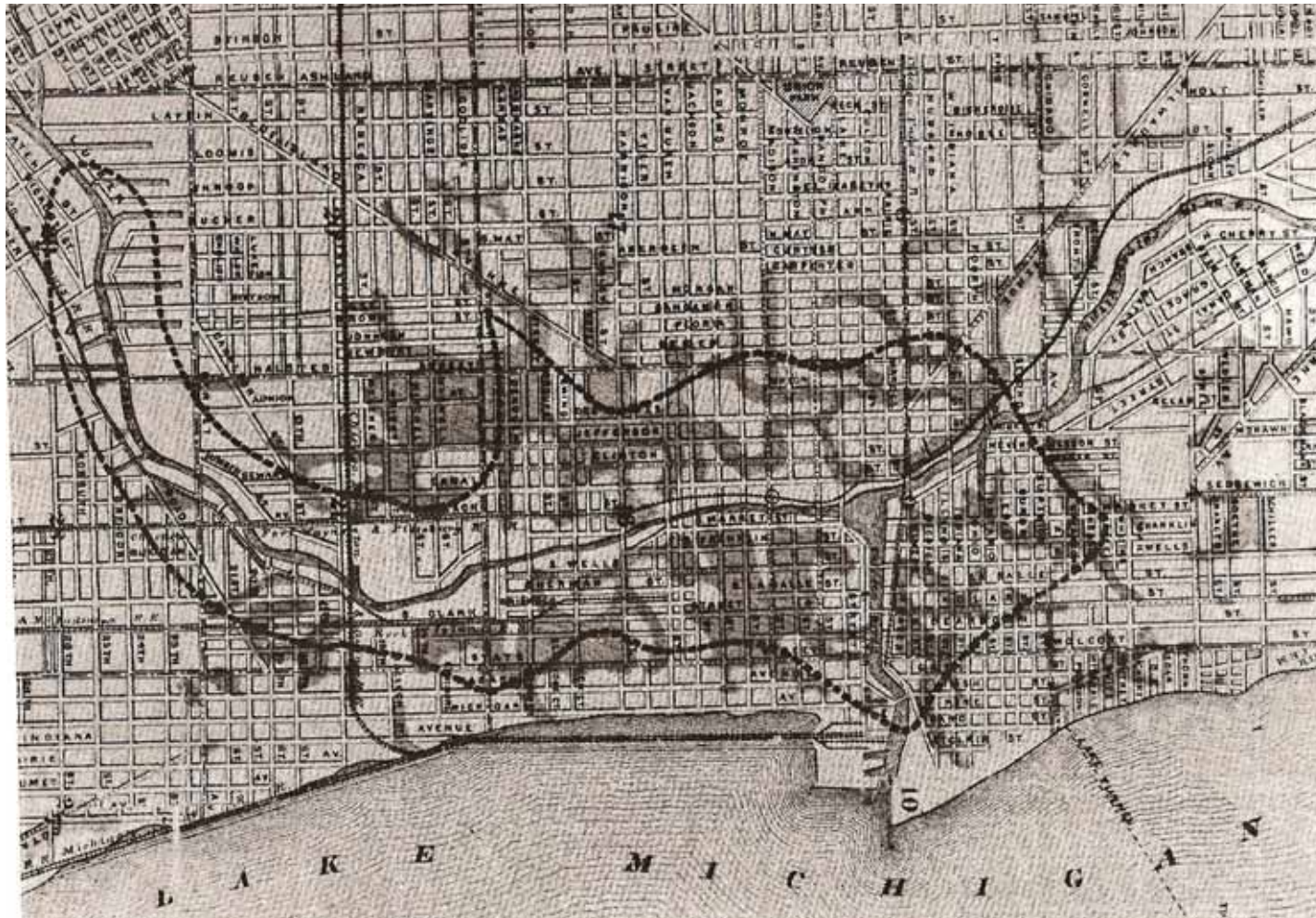
General Winfield Scott, source:
Site Copyright © 2003-2008 Son
of the South,
www.sonofthesouth.net



Le Petit Journal, Bibliothèque
nationale de France, 1912



Chicago Historical Society, *Lifting the City of Chicago ca. 1855*

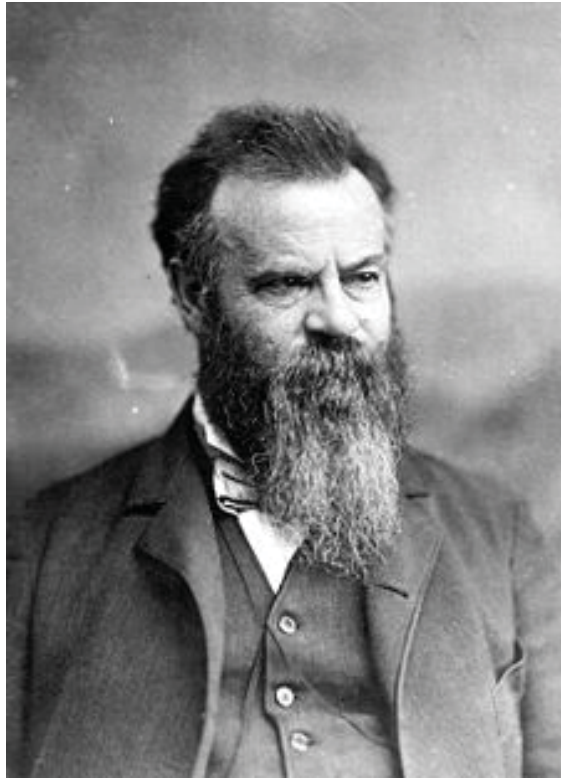


How cholera spread in Chicago in 1866,
Hill, Libby. *The Chicago River*



Photo courtesy:
HUDDLESTON-McBRIDE
LAND DRAINAGE SERVICES
ROCHELLE, ILLINOIS

1906 PRODUCTION TRENCHER



John Wesley Powell early in his career with the United States Geological Survey, ca. 1881.

Currently held in the National Archives and Records Administration of the United States, Still Pictures Unit - Photo Citation # 115-P-42



Portrait of J. W. Powell with Indian, presumed to be taken by Frederick Samuel Dellenbaugh, a member of Powell's second Colorado River expedition, 1871-1874, Beinecke Rare Book and Manuscript Library, Yale University



Historic Birch Lodge, Trout Lake, MI





Major hydropower plants in Ontario and New York on the Niagara River,
Source: Great Lakes Commission, Eisenhower Corporate Park, 2805 S. Industrial Hwy, Suite 100, Ann Arbor, MI 48104-6791



*Cuyahoga River burning: in 1952
Image: Ohio Historical Society*

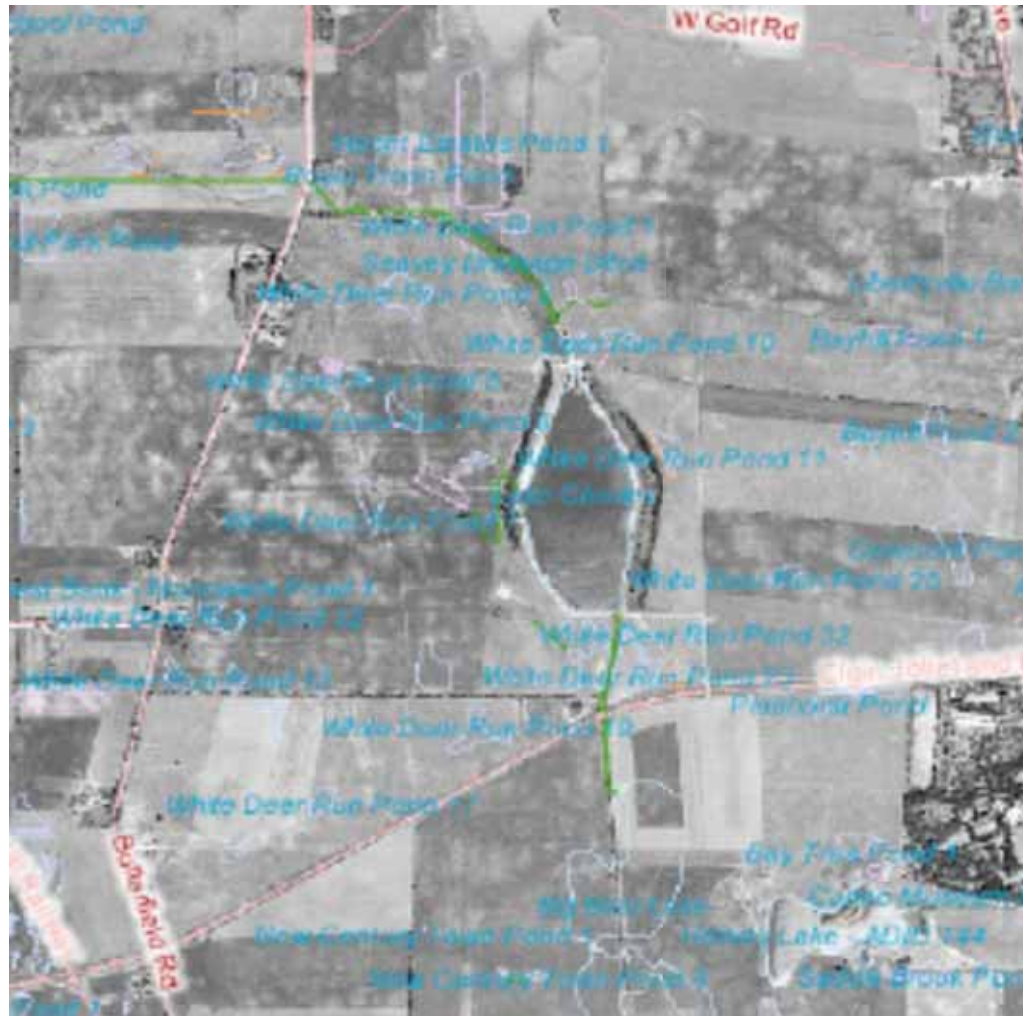




Photo, Nancy Schumm,
2007



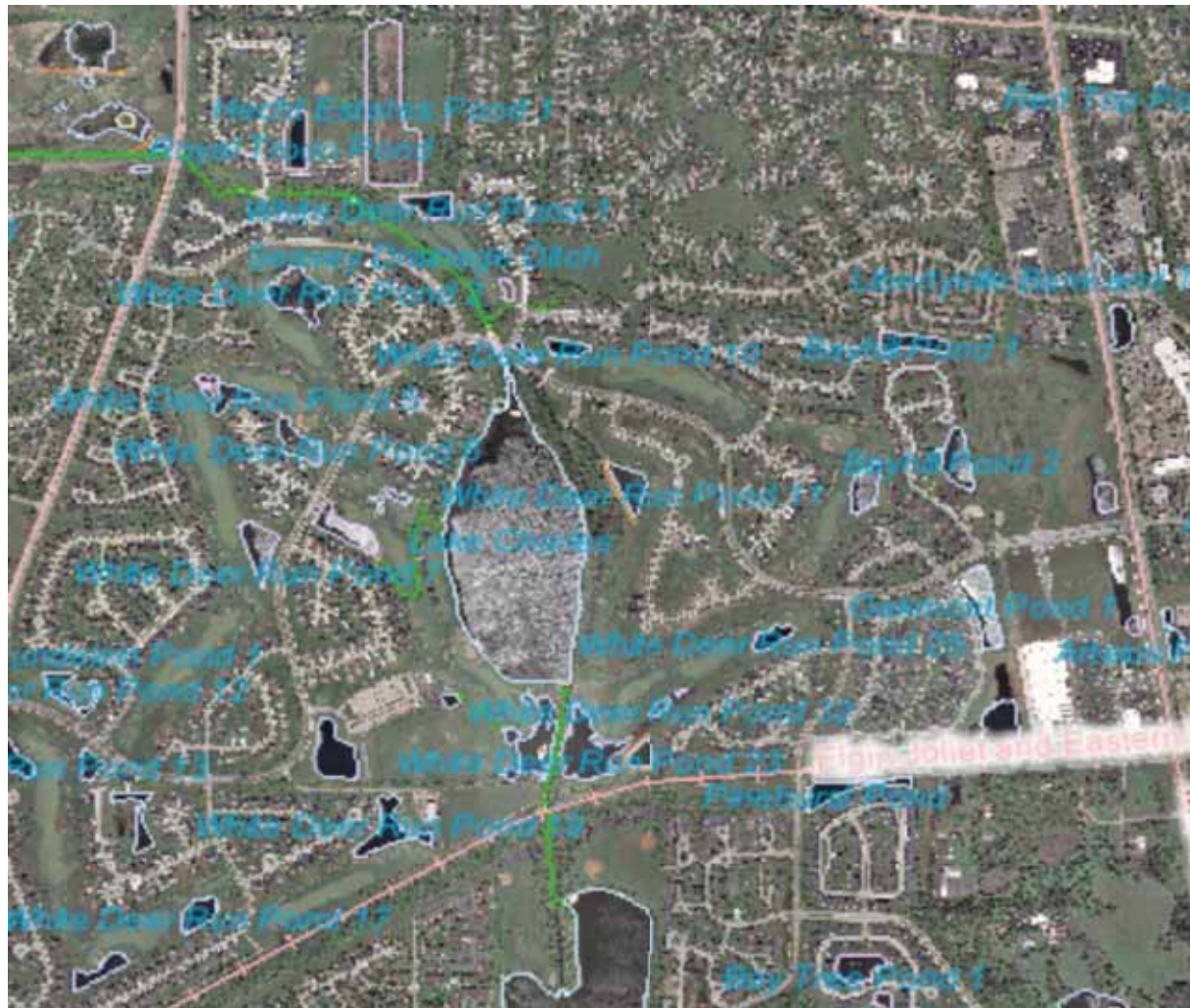
Lake County SMC resources,
channelized water conveyance
system



1939 Aerial Photo Vernon Hills, Illinois, Lake Charles
Map source, <http://gis2.co.lake.il.us/maps/>



1974 Aerial photo, Vernon Hills, Illinois, Lake Charles
Map source, <http://gis2.co.lake.il.us/maps/>



2010 Aerial photo, Vernon Hills, Illinois, Lake Charles
Map source, <http://gis2.co.lake.il.us/maps/>



July - September, 1989



October 5, 2008

The Aral Sea, 1989: earthobservatory.nasa.gov, [aral sea 1989 250m](#)
[File:Aral Sea 05 October 2008.jpg](#), This file is in the [public domain](#)
because it was created by [NASA](#). NASA copyright policy states that
"NASA material is not protected by copyright **unless noted**"



Map design by [Philippe](#) Rekacewicz, UNEP/GRID-Arendal





Schumm Consulting LLC
www.schummconsulting.com