

# **Accessing 319 Funding for Watershed Planning**

**Mike Prusila, Watershed Planner**



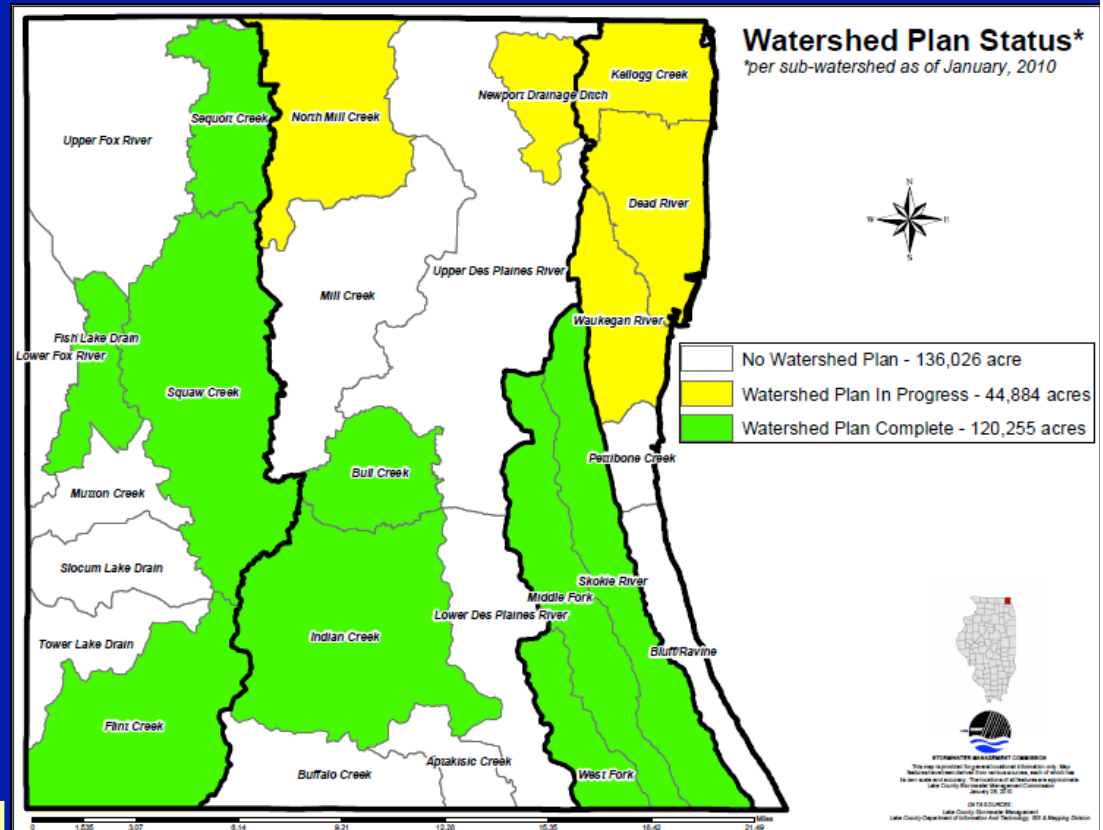
**Illinois Lakes Management Association Conference Workshop  
March 3, 2010**

# **Introduction**

- **Lake County Stormwater Management Commission (SMC) is a County-wide agency**
- **Watershed Planning is a component of the SMC mission**
- **Planning facilitated by long-standing partnerships with other County departments, local governments and organizations, and State and Federal Agencies**

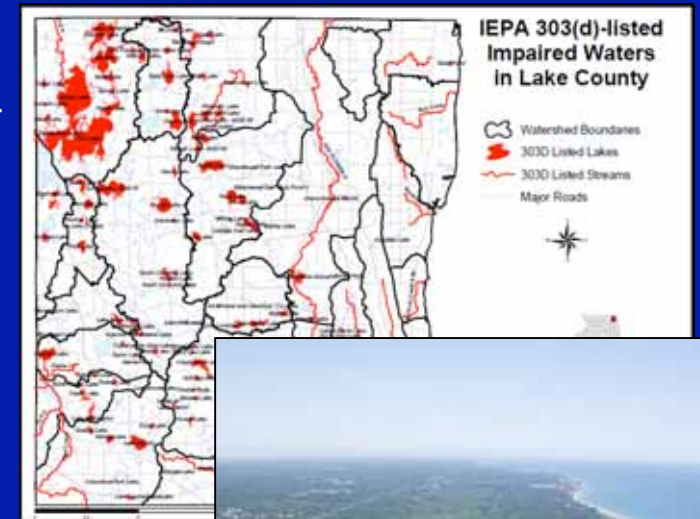
# Lake County Watershed Planning

- 10 Plans managed by SMC
  - 8 Watershed-Based Plans
  - 2 WBPs funded directly by IL EPA with 319 funds
- 2 Plans managed by others using 319 funds (Flint Creek Watershed Partnership, Waukegan Harbor CAG)



# Before you get started...

- **Why does the watershed need a plan?**
  - Impaired waters on 303(d) list
  - Probable impairments, not listed
  - Current or future impacts on water quality
  - High quality resource to protect from pollution
- **Identify the Nonpoint Source Pollution element**

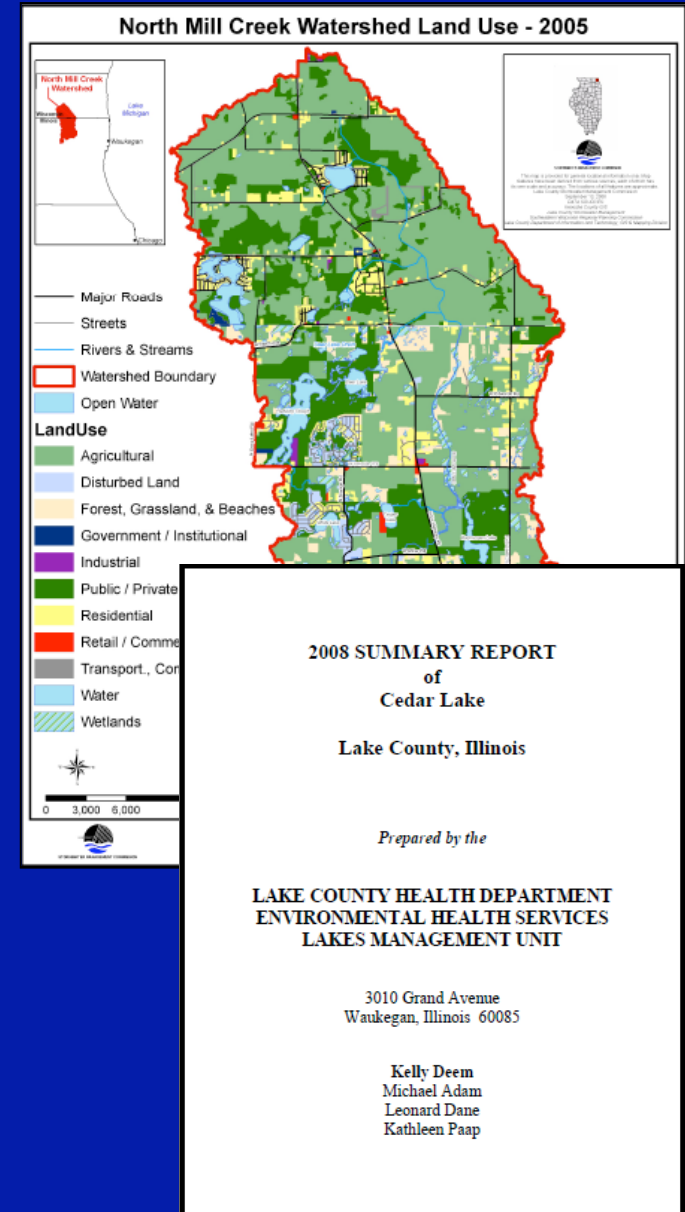


# Contact the Funding Source

- **Call Illinois EPA-Watershed Management**
  - How much funding is available?
  - Is your watershed in a priority area?
  - Does your budget sound reasonable?
- **Remember: only ~20% of all 319 funding is available for planning, monitoring & demonstration projects**

# Get the Basic Facts

- **Preliminary research/data gathering**
  - Do you have a watershed map?
  - Are there impaired waters?
  - Do you have a land use map?
- **Identify obvious data needs**
- **Identify existing plans and studies**



# Resources and Partners

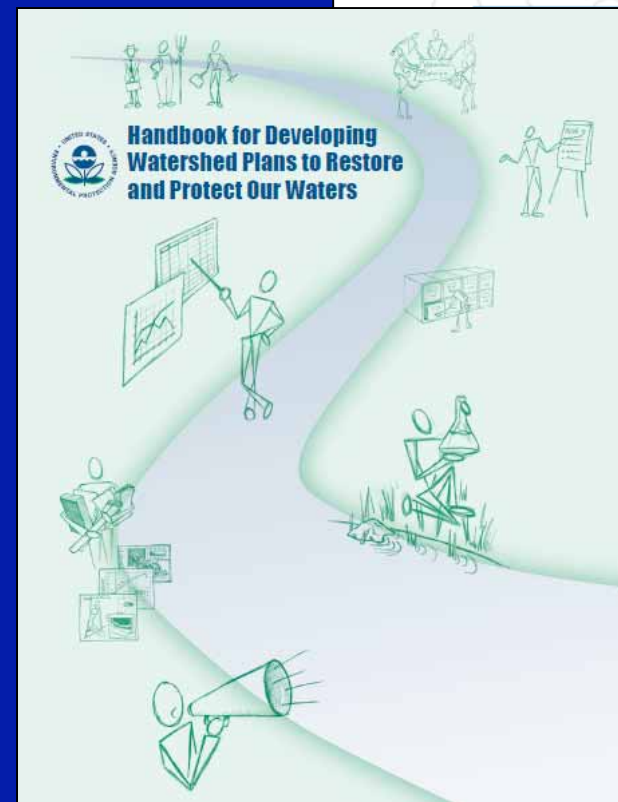
- **Are there existing partnerships?**
- **Can partners contribute cash or in-kind match?**
- **Organization/Watershed talent pool:**
  - **GIS**
  - **Planning**
  - **Engineering/Pollutant Modeling**
  - **Grant Writing**

# Resources and Partners

- **Watershed Planning guides**
  - USEPA “Handbook for Developing Watershed Plans to Restore and Protect Our Waters”
  - USEPA “Getting in Step”
  - CMAP/IL EPA “Guidance for Developing Watershed Action Plans in Illinois”

## Guidance for Developing Watershed Action Plans in Illinois

Chicago Metropolitan  
Agency for Planning





# Bonus Features

- Can additional beneficial components be added to the proposal?
  - Monitoring
  - Education
  - Outreach
- QAPP (Quality Assurance Project Plan)



# Institutional Capacity

- Will your organization be able to manage the planning project and administer the grant?
  - Meetings & Correspondence
  - Technology
  - Plan Development/Review
  - Contracts
- Significant workload impact for 2 years

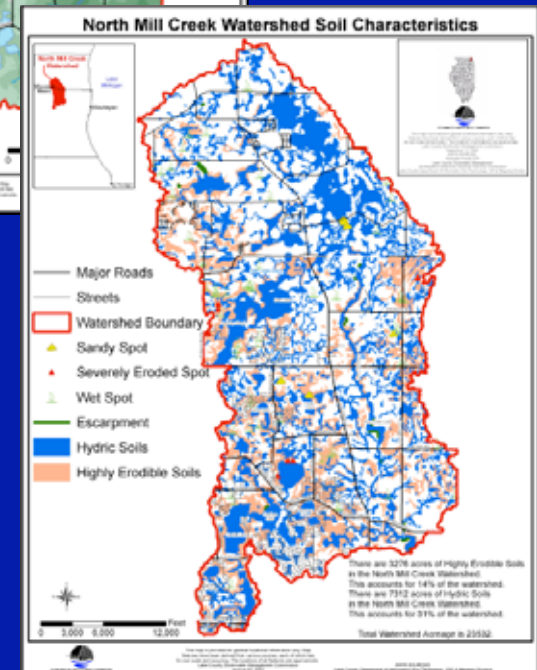
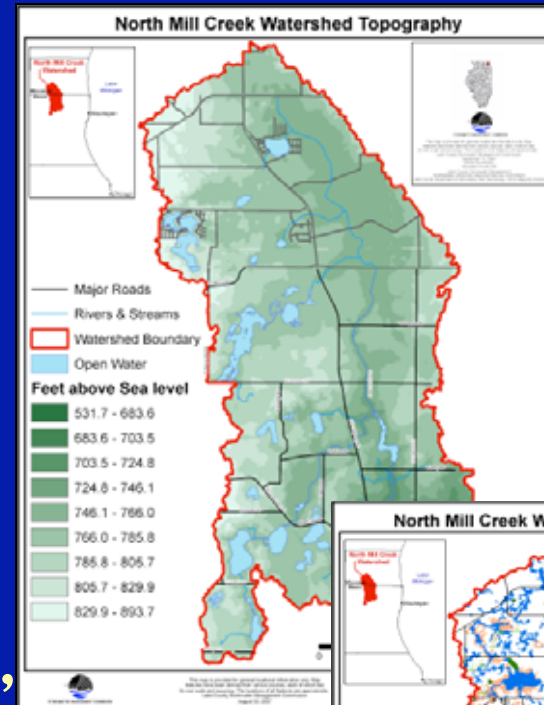


# **The 40-Hour Rule**

- **SMC assumes that writing a GOOD 319 grant proposal will require AT LEAST 40 hours of staff time**
- **Begin your proposal well ahead of the July 31 submission deadline**

# The Proposal

- **Requirements covered in application**
  - Most elements are self-explanatory
  - Most information can be found online
  - You may need to contact a local agency for demographic, geologic, & geographic information
  - Provide a detailed description of the watershed





# Problem Statement

- **Make the case for the need for a watershed plan**
- **Don't forget the Nonpoint Source Pollution Element!**
- **Include impaired waters/303(d) list**
- **Use photos if they are illustrative of watershed conditions**

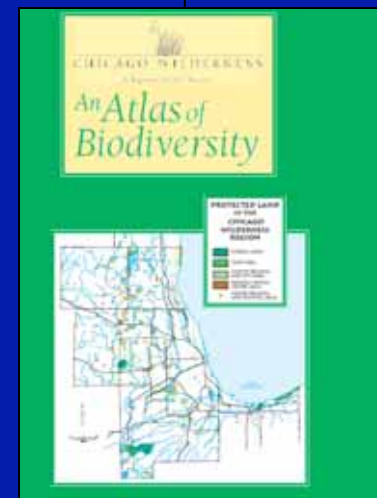


# Project Description

- **What will the plan accomplish?**
- **Include results & deliverables**
- **Outcomes for plans are different from restoration or Best Management Practices**
  - **Stakeholder network (e.g.)**
  - **Identify issues/opportunities (e.g.)**
  - **Mention 9 elements of WBPs (US EPA)**
- **Don't forget bonus features!**

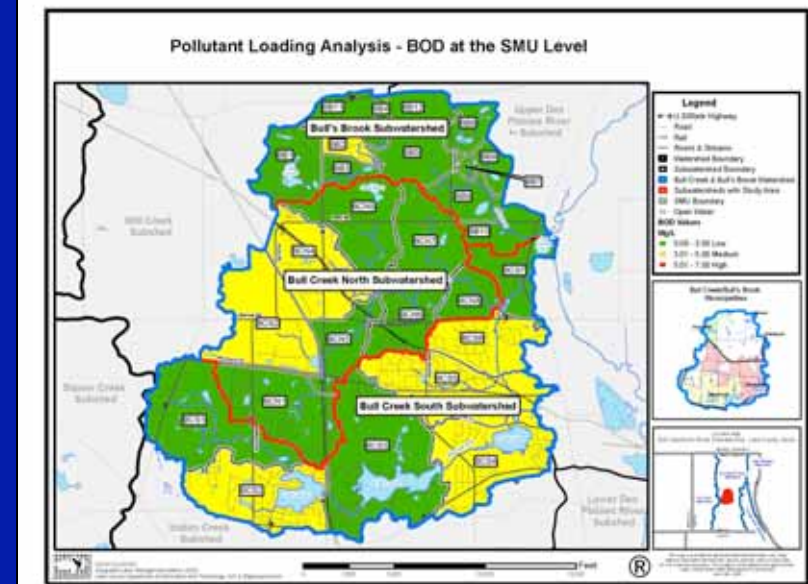
# Project Description

- **Will the public be involved?**
- **How will the planning project be cost-effective?**
  - Existing partnerships & data-sharing
  - In-kind data collection, summary, & analysis
- **Relationship to existing plans & studies**



# Scope of Work

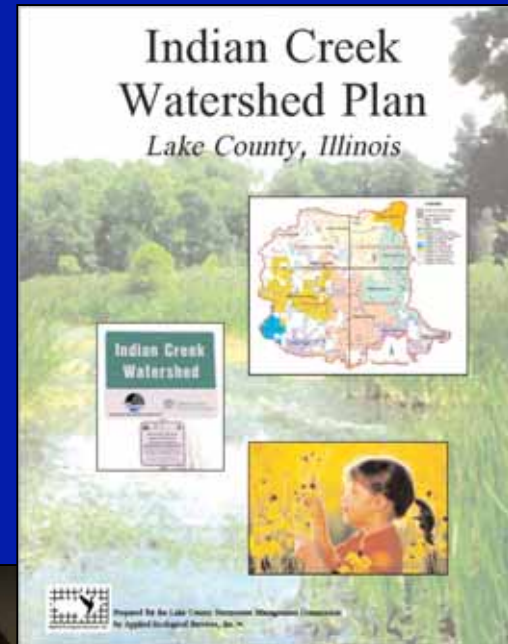
- What will your plan achieve?
- Do you need to gather more data?
- What level of analysis do you need?
- Do you need to hold meetings?
- Who is going to do it?
- Bonus Features





# Schedule

- Allow adequate time to complete items in the scope
- How many meetings will you have?
- Allow for stakeholder input for major items
- Time for plan review & comment
- 319 Grants generally last 2 years
- Logical Scope & Schedule indicates level of thought & interest in entire project

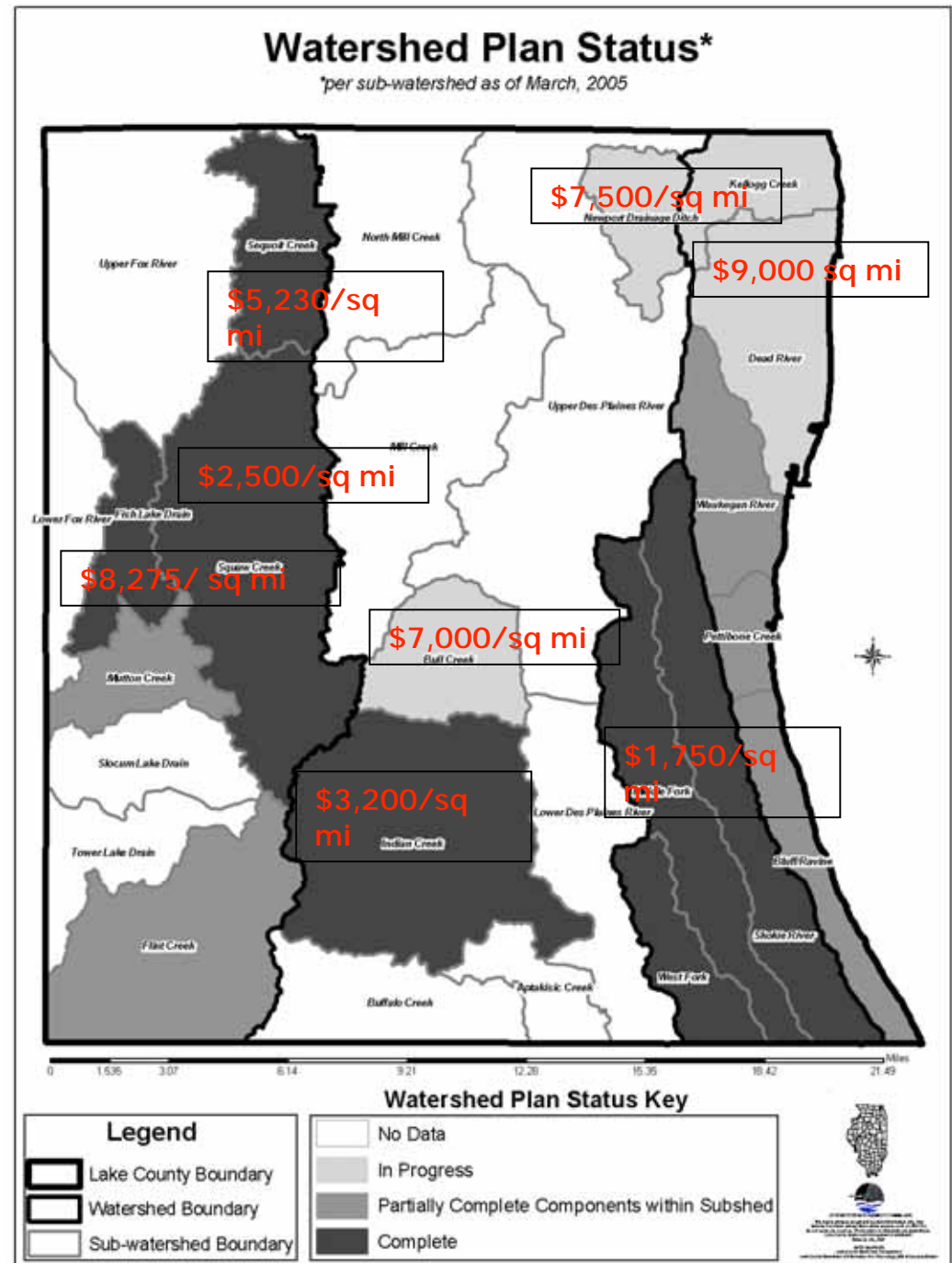


# Budget

## Watershed Plan Costs

Contract budgets range from \$1,750-\$9,000/sq. mi.

Does not include SMC staff costs



# Budget

- **Budgets are always difficult to estimate**
- **First-timers should contact someone with prior knowledge—and you can find them!**
- **Don't forget the Bonus Features**
- **More detailed Scope = better Budget estimate**

# Final Thoughts

- **Before you start...**
  - **Gather as much data as possible**
  - **Think about a preliminary scope and budget**
  - **Talk to Illinois EPA staff about the project**
- **Identify Need for a Watershed Plan**
- **Detailed Scope => refined Budget**
- **If at first you don't succeed...**
  - **Be persistent and refine for next year**

# Contact Information

**Web Site: [www.lakecountyil.gov/stormwater](http://www.lakecountyil.gov/stormwater)**

**Mike Prusila**

**Phone 847-918-5266 (will change in April)**

**Email: [mprusila@lakecountyil.gov](mailto:mprusila@lakecountyil.gov)**